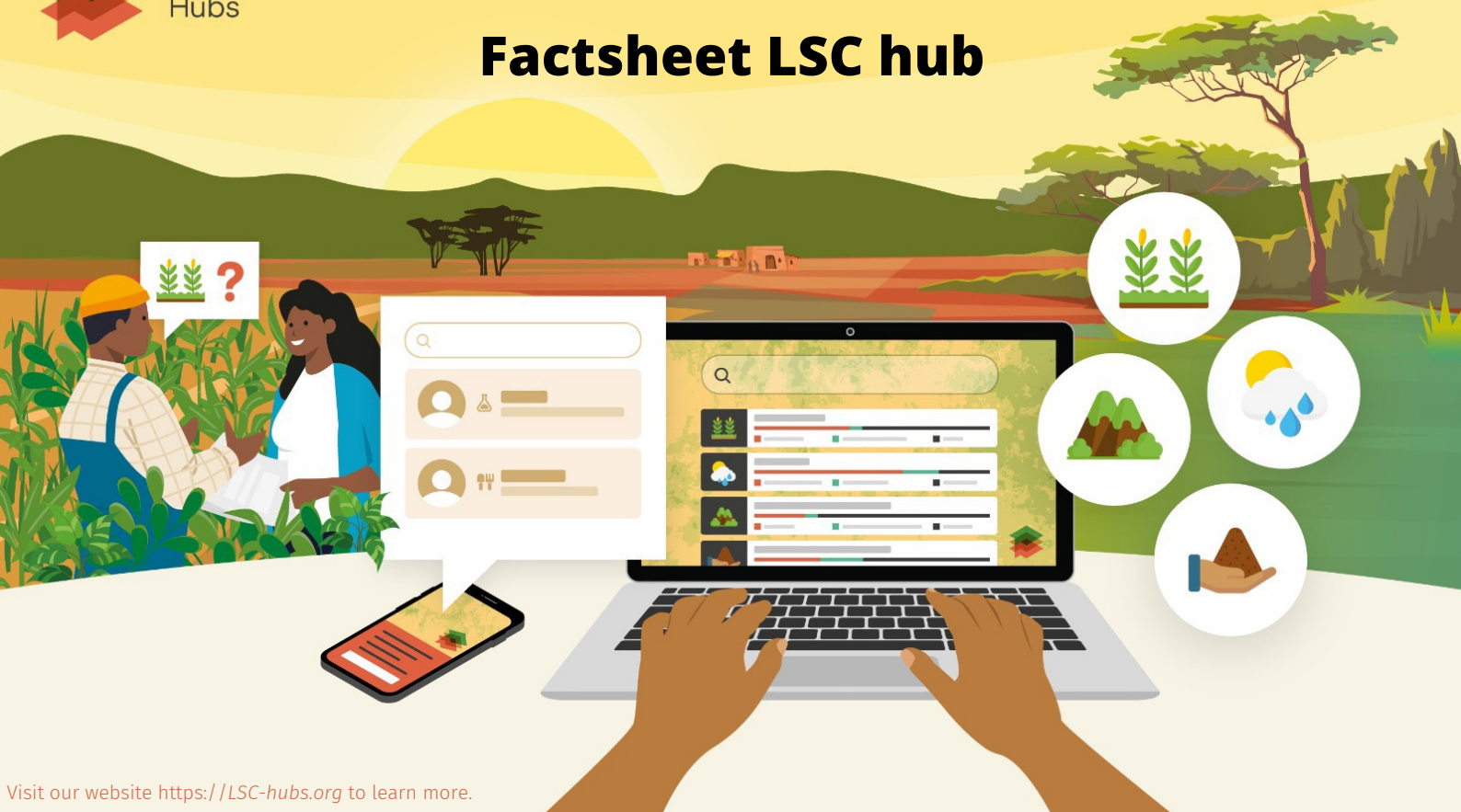


Factsheet LSC hub



Visit our website <https://LSC-hubs.org> to learn more.

DESCRIPTION

The land, soil and crop (LSC) hub is an easy-to-access platform enabling stakeholders to access information on soil, crops, land and climate. An LSC hub supports improved decision-making for climate-smart agriculture at national, regional and local levels. The focus is on two use cases: soil fertility management and soil water conservation.

The LSC hub brings together data users and providers that enable the exchange of knowledge and information between farmers, knowledge institutes, development partners, the private sector and policymakers.

STAKEHOLDERS

- **Data users:** to get recent data, improve decision-making on soil fertility and soil water conservation, find answers to agriculture-related questions and find other stakeholders.
- **Data providers:** to reach a large group of potential users, promote your data and have a more significant impact.

FUNCTIONALITIES

The LSC hub functionalities depend on the user's skills and needs. It may contain the following functionalities:

1. **LSC data:** catalogue to find relevant open data
2. **LSC Information services:** listing of existing projects, initiatives, apps, services and tools
3. **LSC models:** an overview of technical models for assessing soil fertility and soil water conservation
4. **LSC applications:** description of the use cases and how to use the available information for the two use cases
5. **LSC user network:** find other stakeholders

OWNERSHIP

The National Agriculture Research Organisations hosts, maintains and operates the LSC hub.

The LSC hub will be initiated in three (3) pilot countries: Kenya, Ethiopia and Rwanda.



Ministry of Foreign Affairs

Project is funded by:



ISRIC
World Soil Information

Project partners include:



ISRIC
World Soil Information

